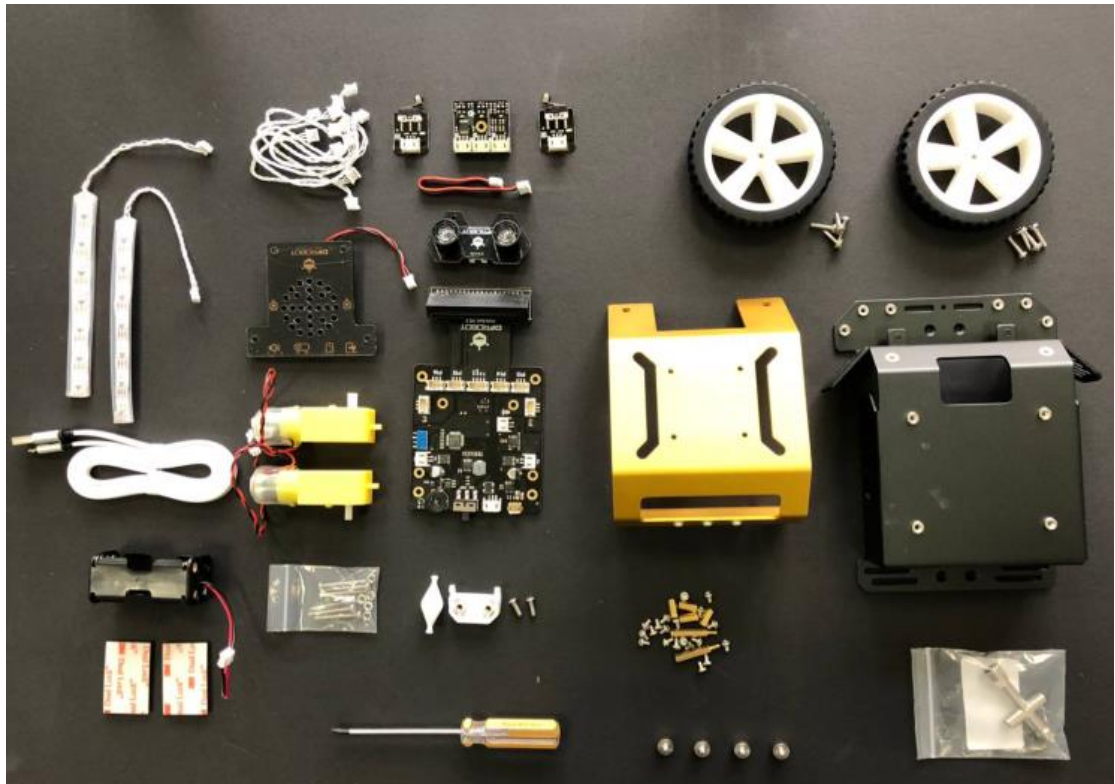


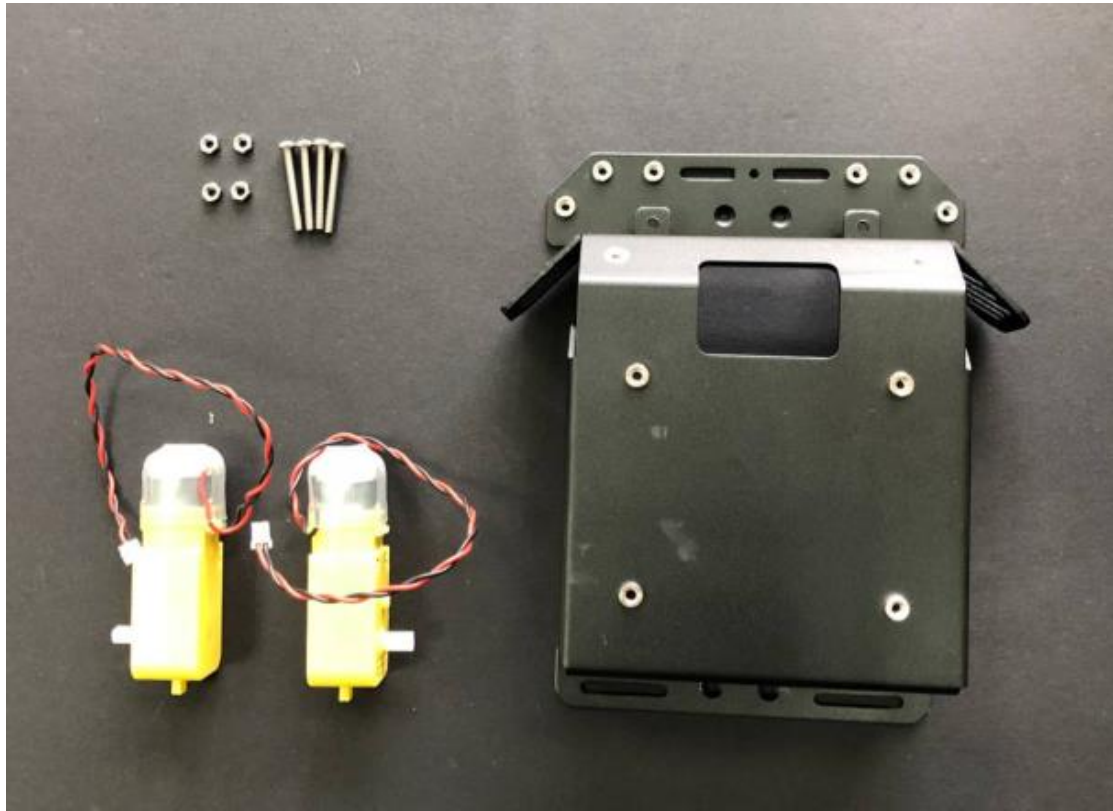
目录

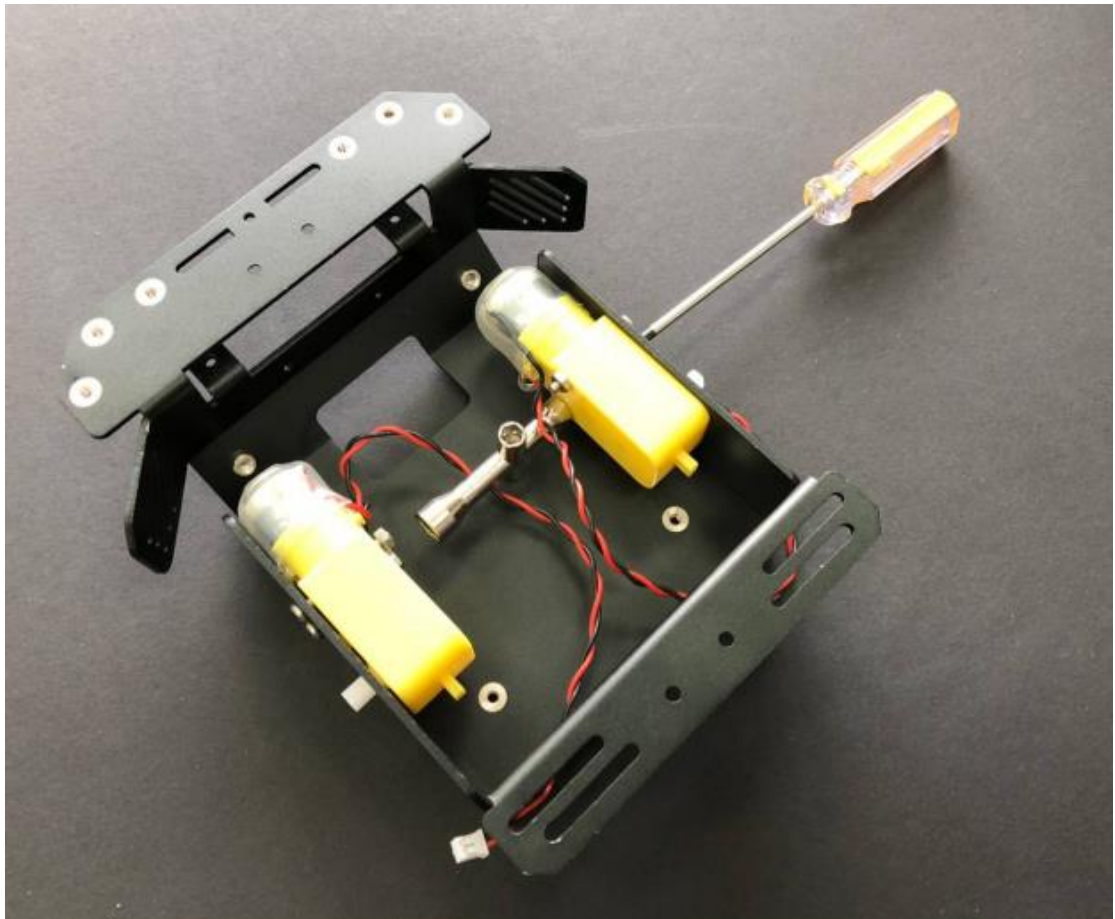
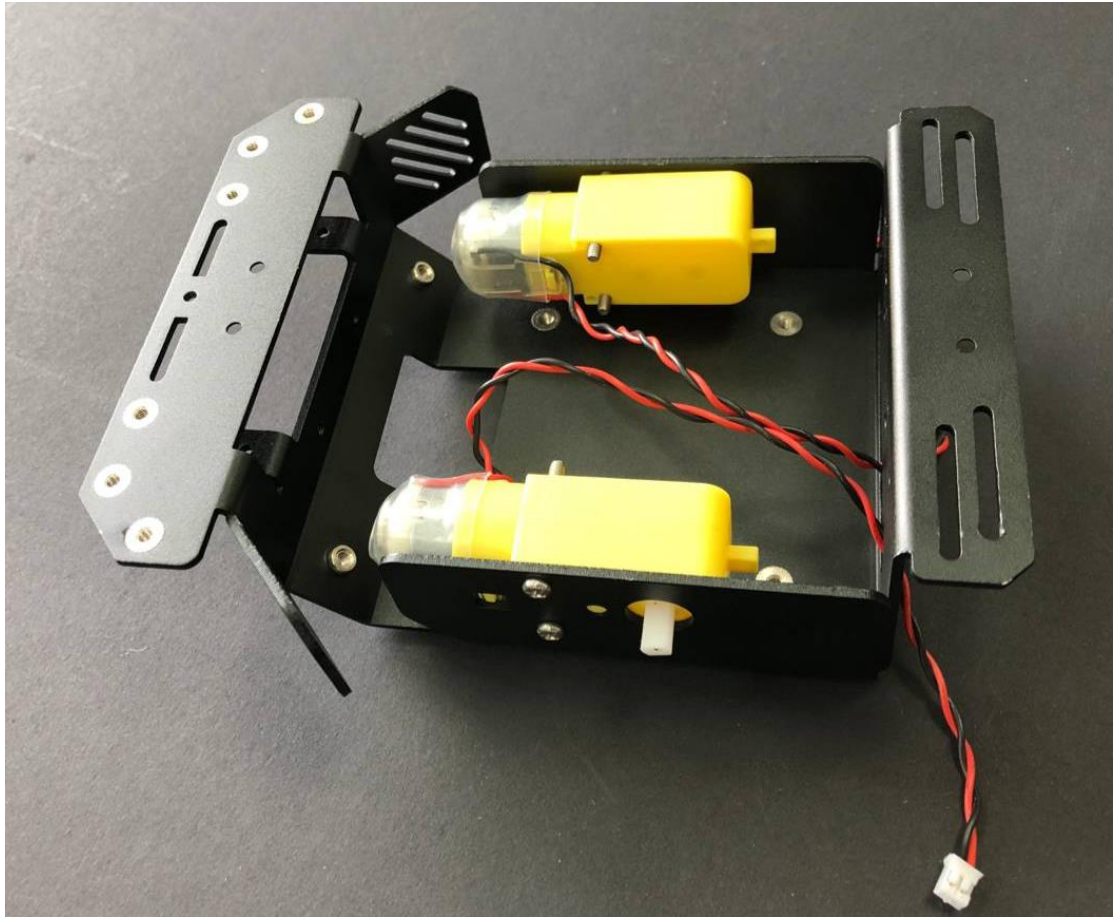
物料全视图:	2
STEP 1: 组装电机.....	3
STEP 2: 安装喇叭到电路板.....	7
STEP 3: 组装电路板到车体.....	9
STEP 4: 装上轮子.....	10
STEP 5: 装上电池盒.....	12
STEP 6: 组装支撑轮.....	14
STEP 7: 组装上碰撞及巡线传感器.....	16
STEP 8: 装上超声波.....	19
STEP 9: 贴好灯带.....	21
STEP 10: 装好车顶盖.....	23
STEP 11: 插好 micro:bit.....	24
完成啦!	24

物料全视图：

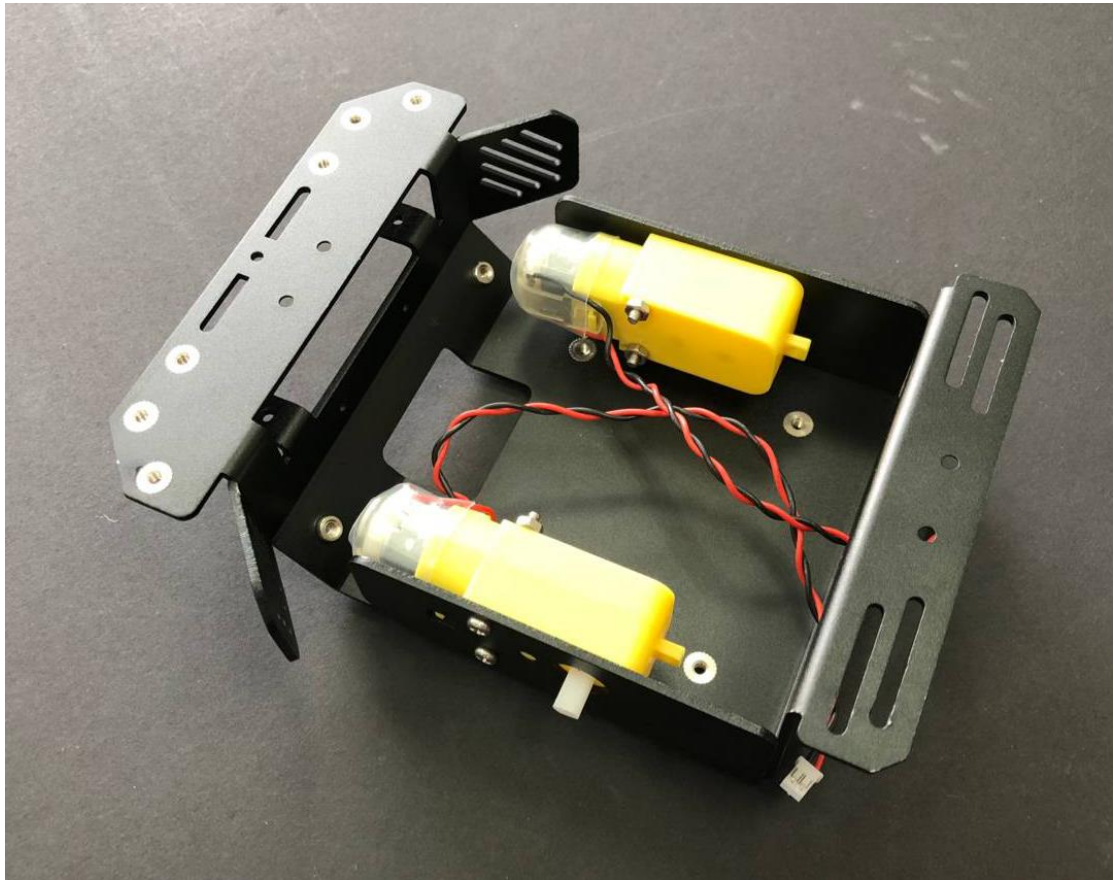


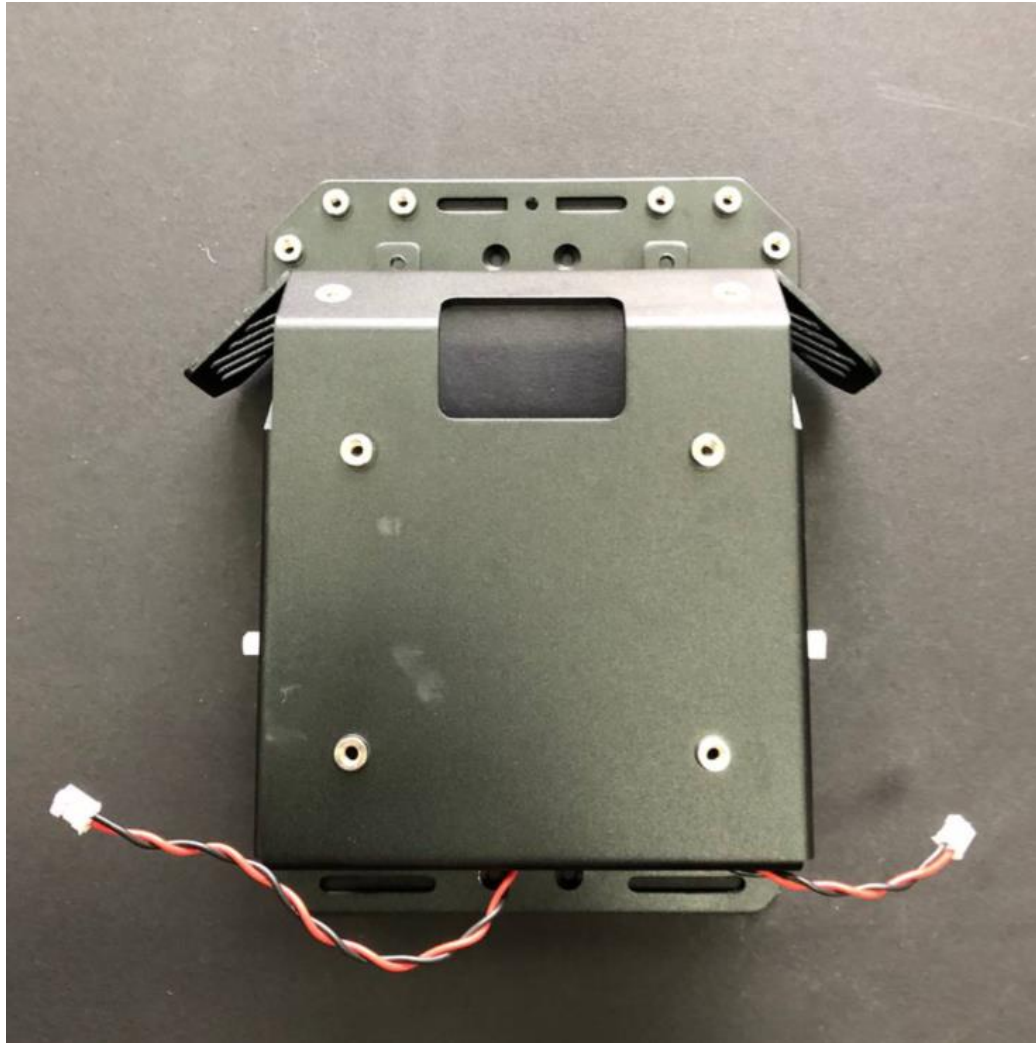
STEP 1: 组装电机



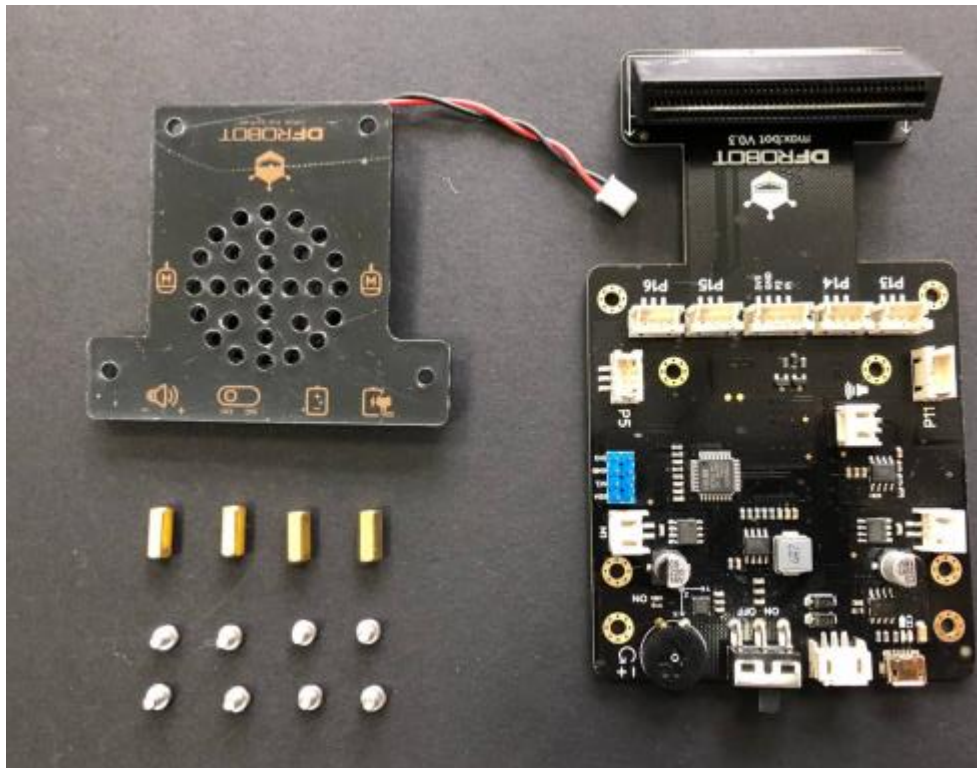


为了方便接线，注意把两根电机线从后端穿出

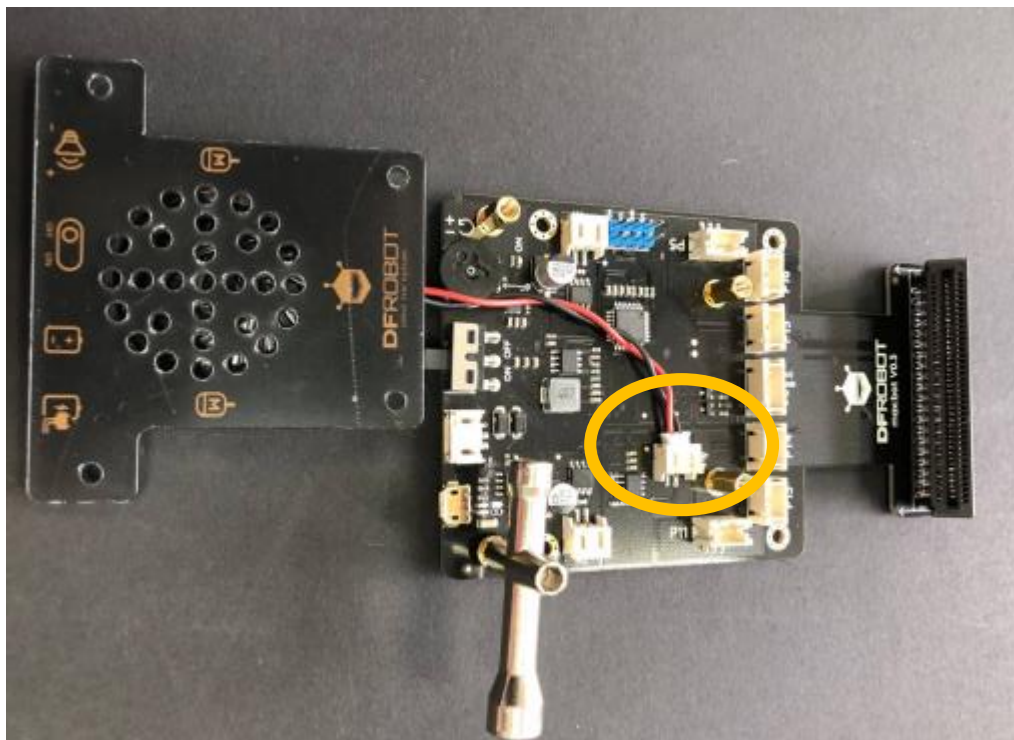


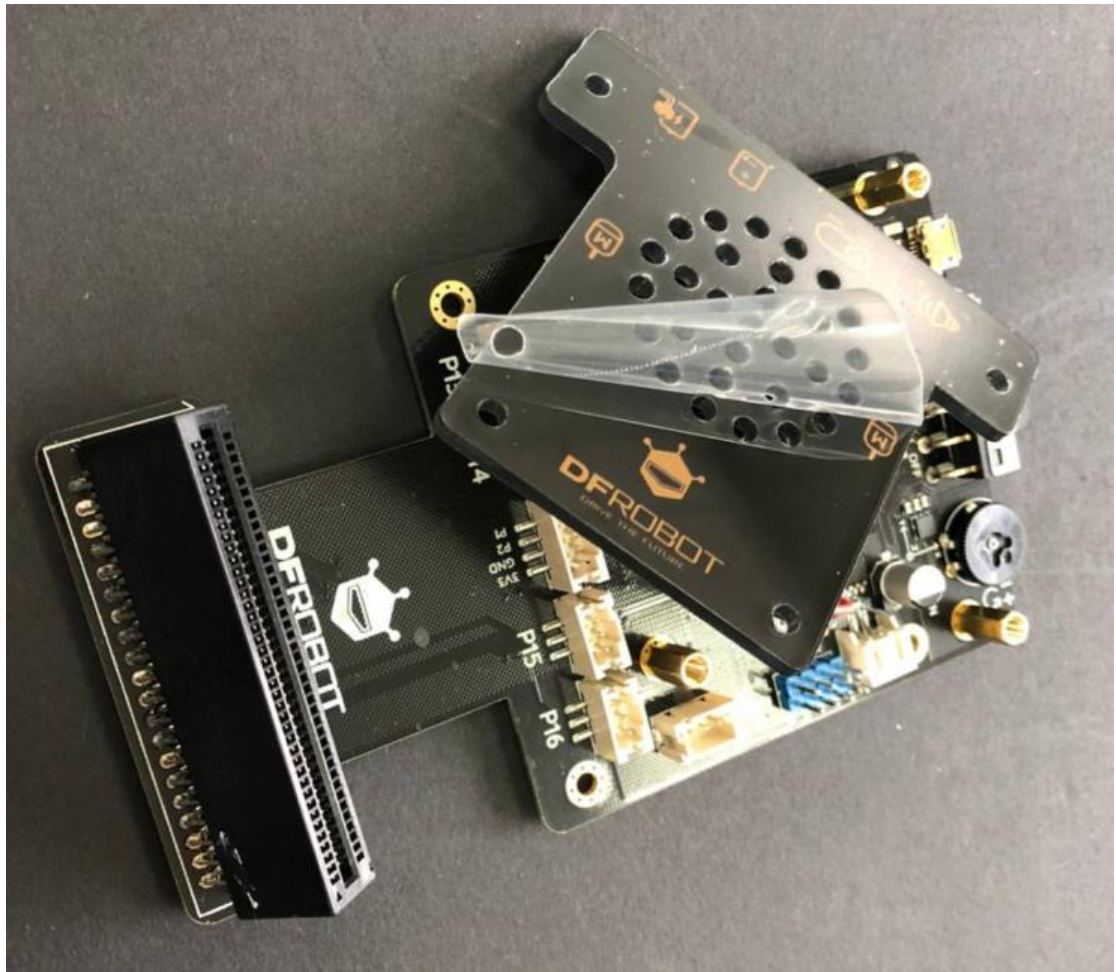


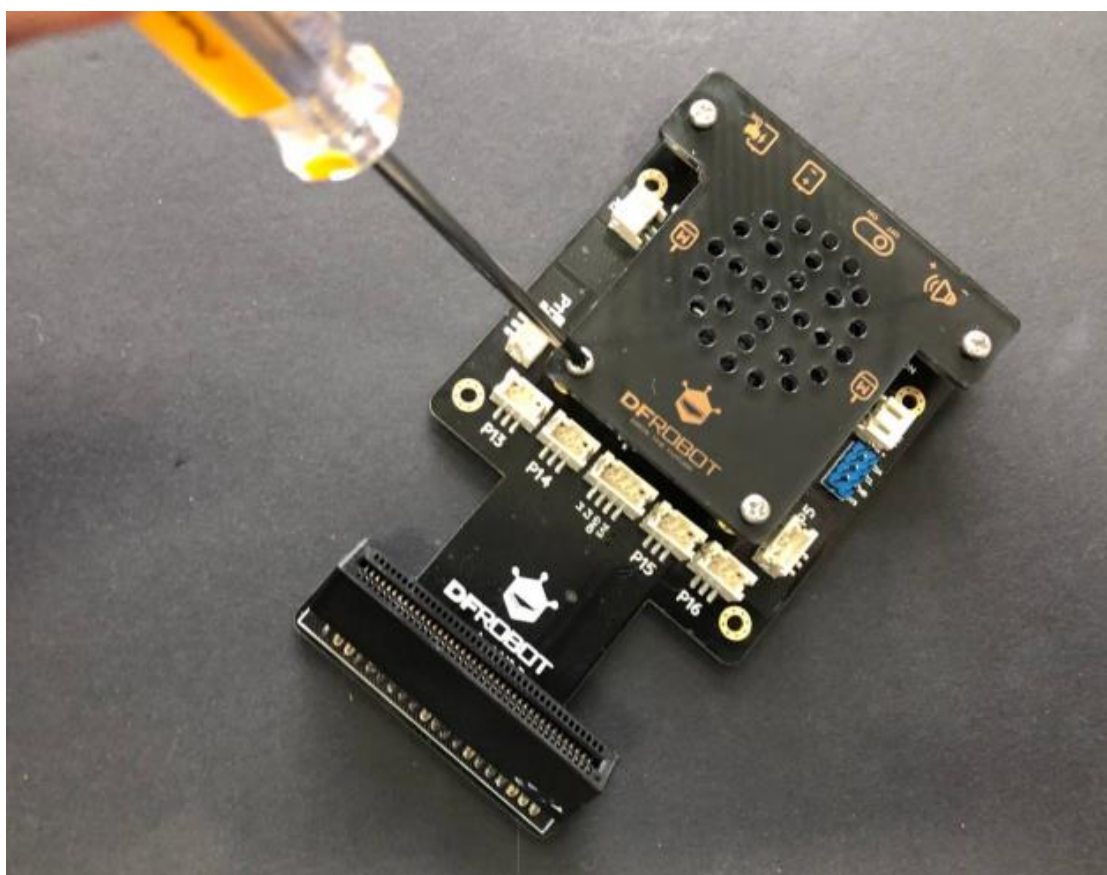
STEP 2: 安装喇叭到电路板



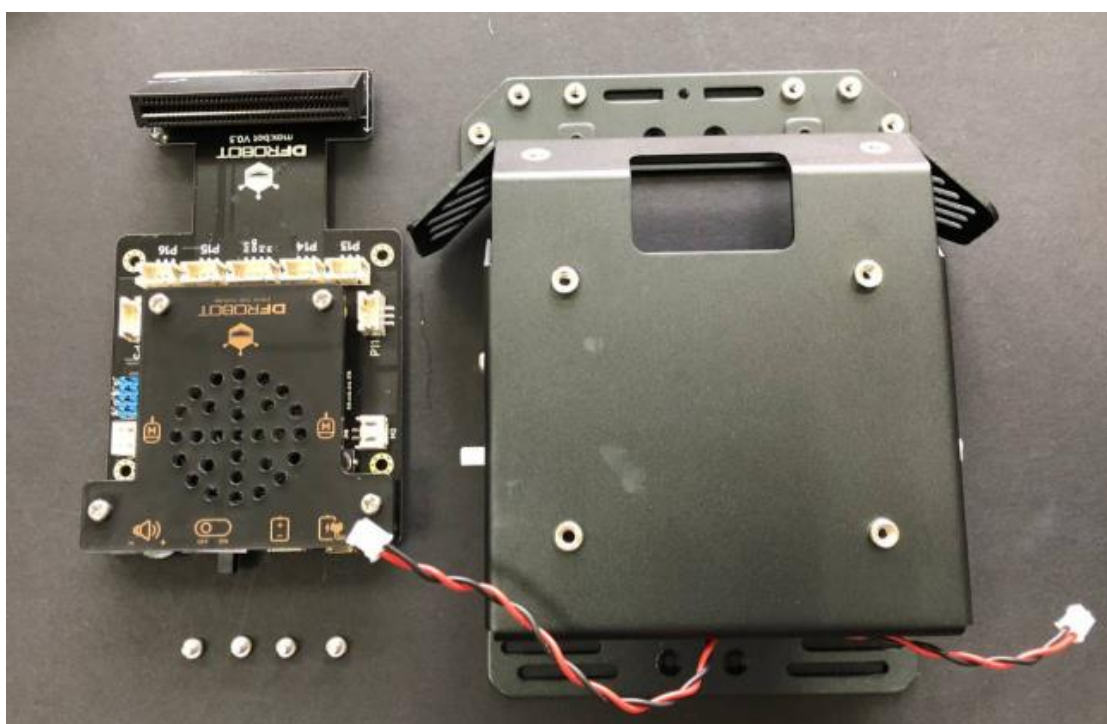
注意要先连好线之后，再安装

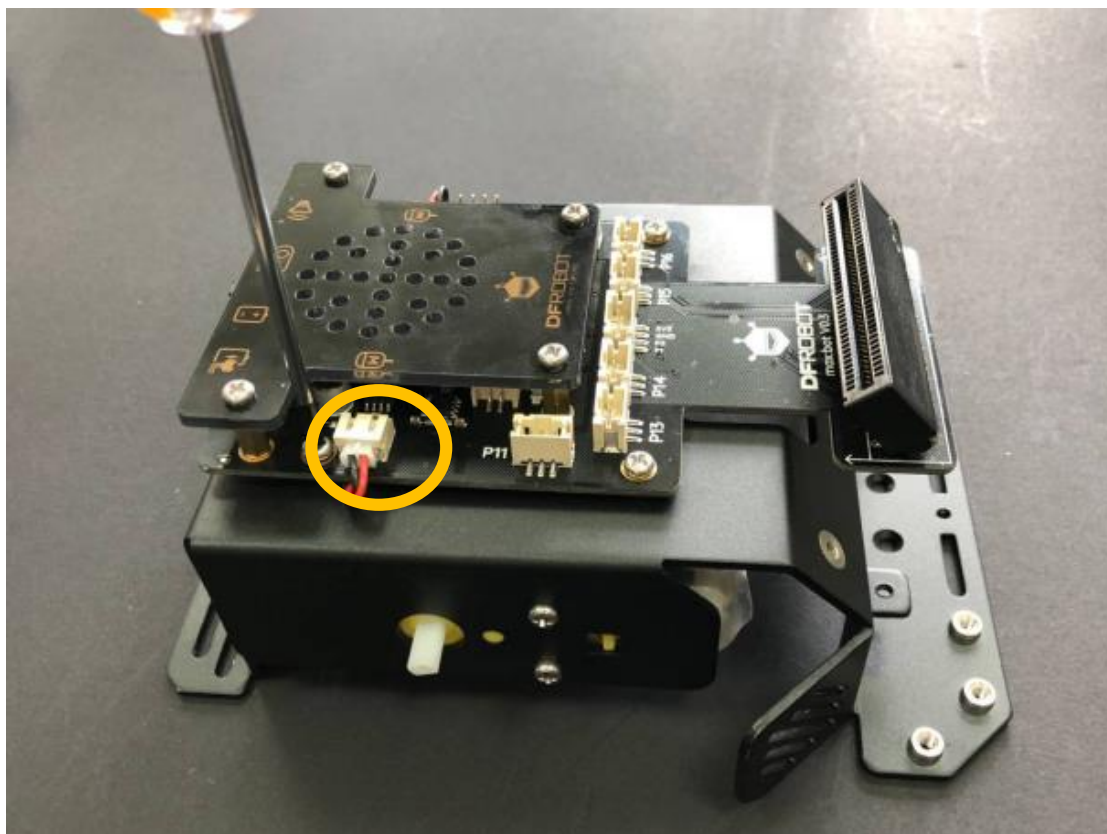






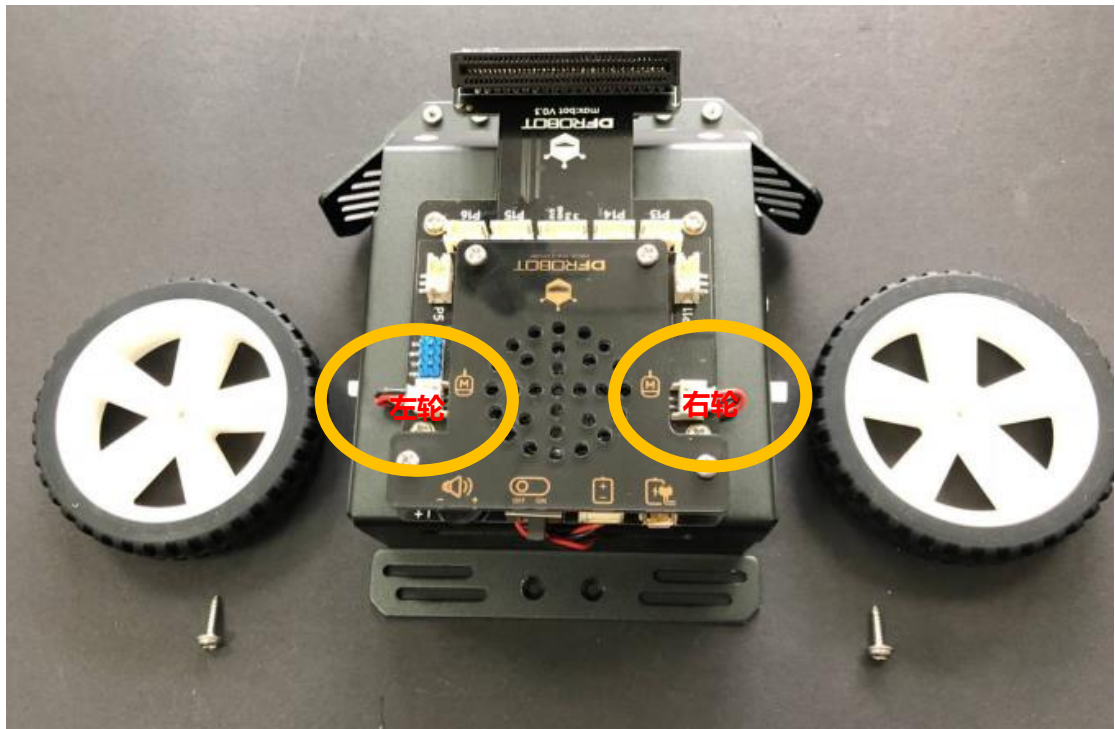
STEP 3: 组装电路板到车体



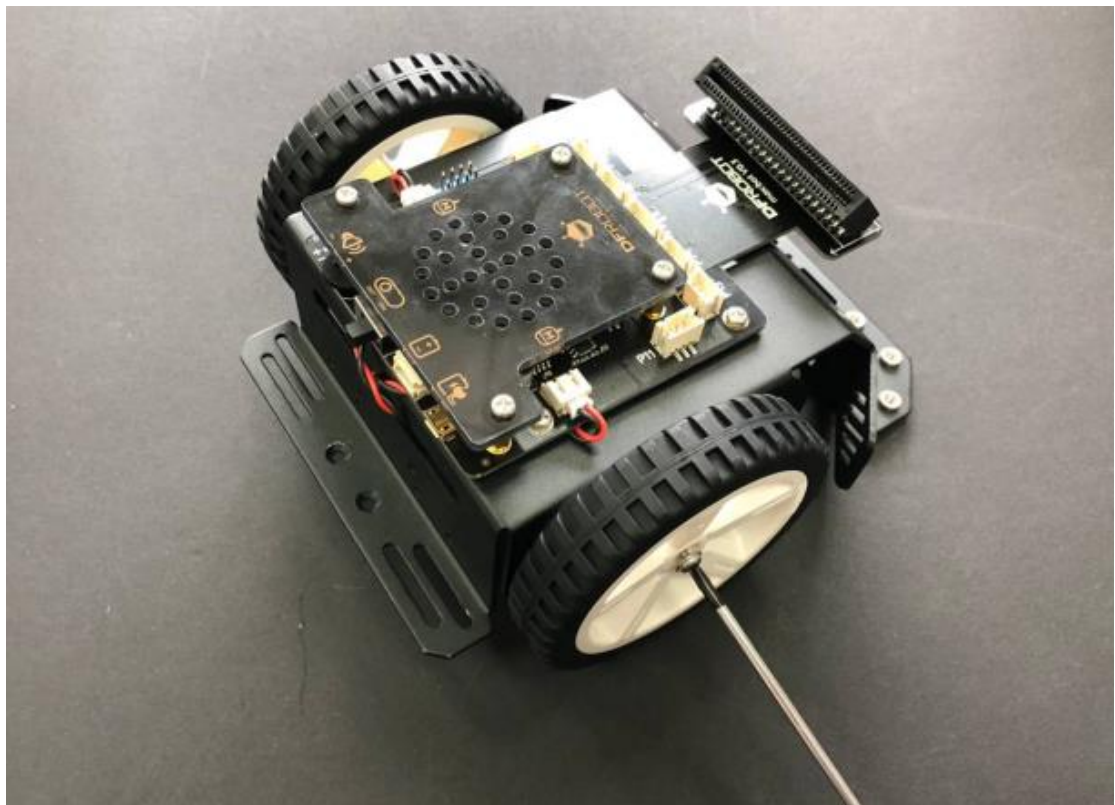


STEP 4: 装上轮子

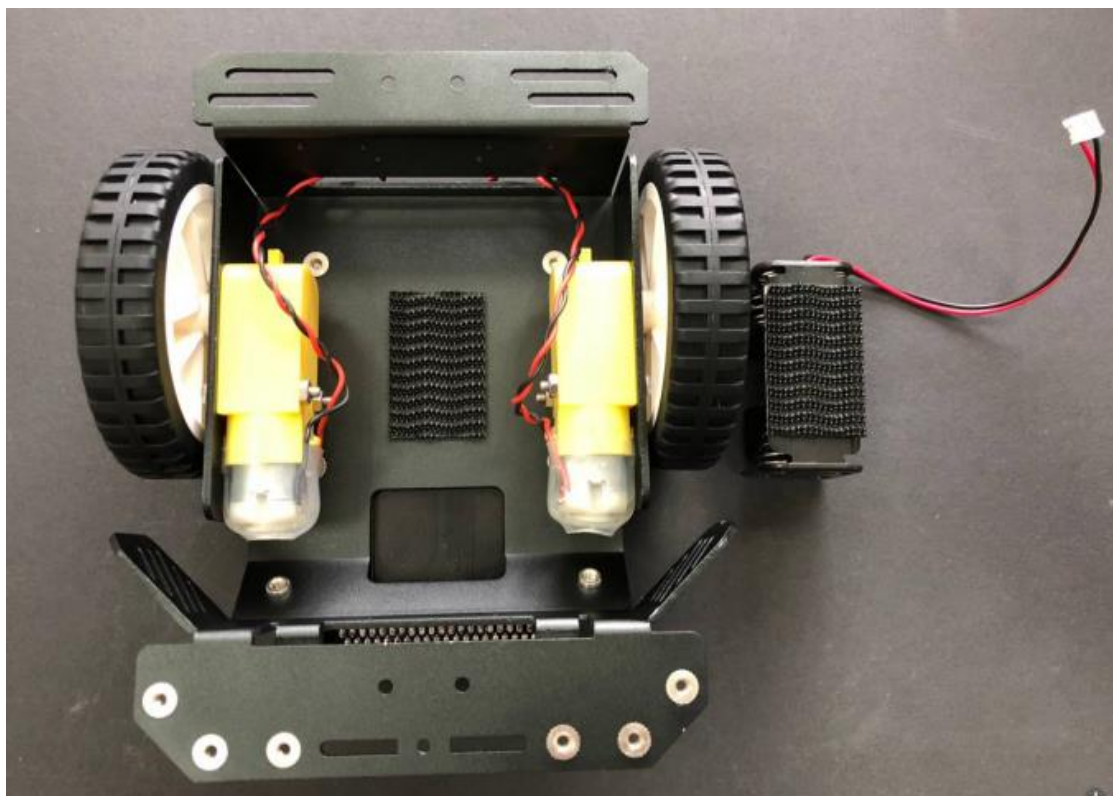
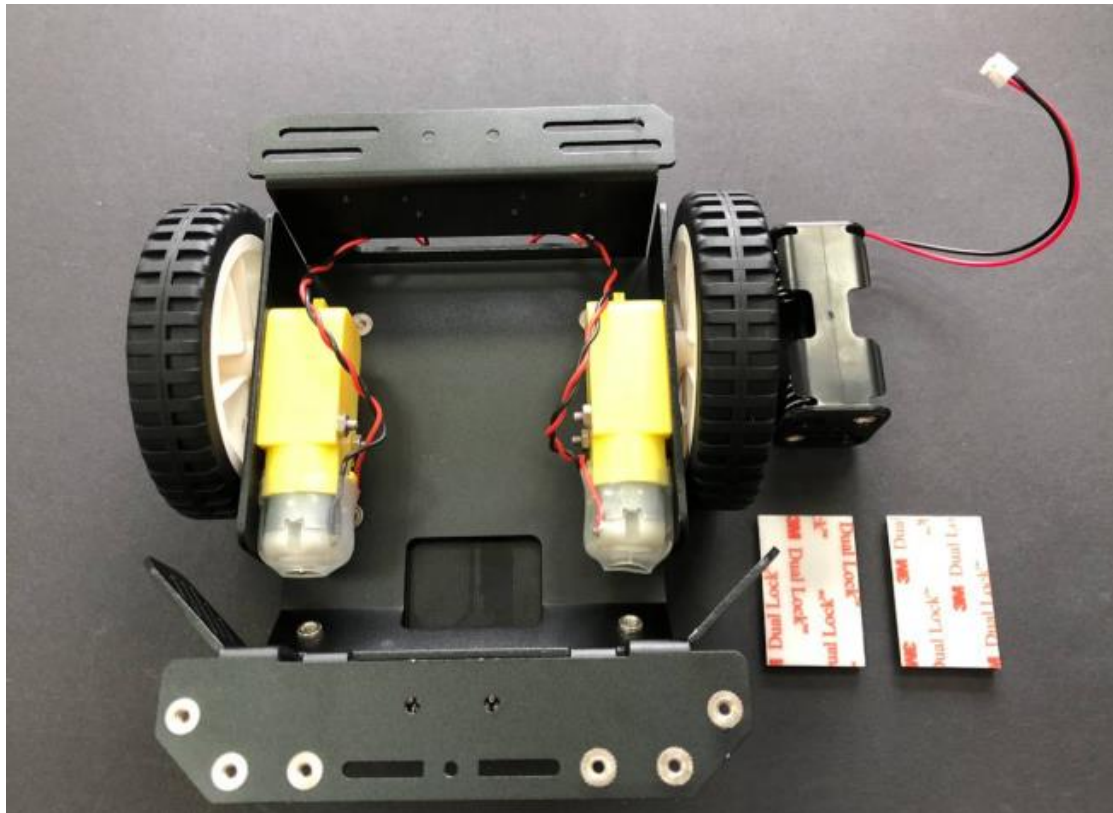
确保电机的线已经接好哦

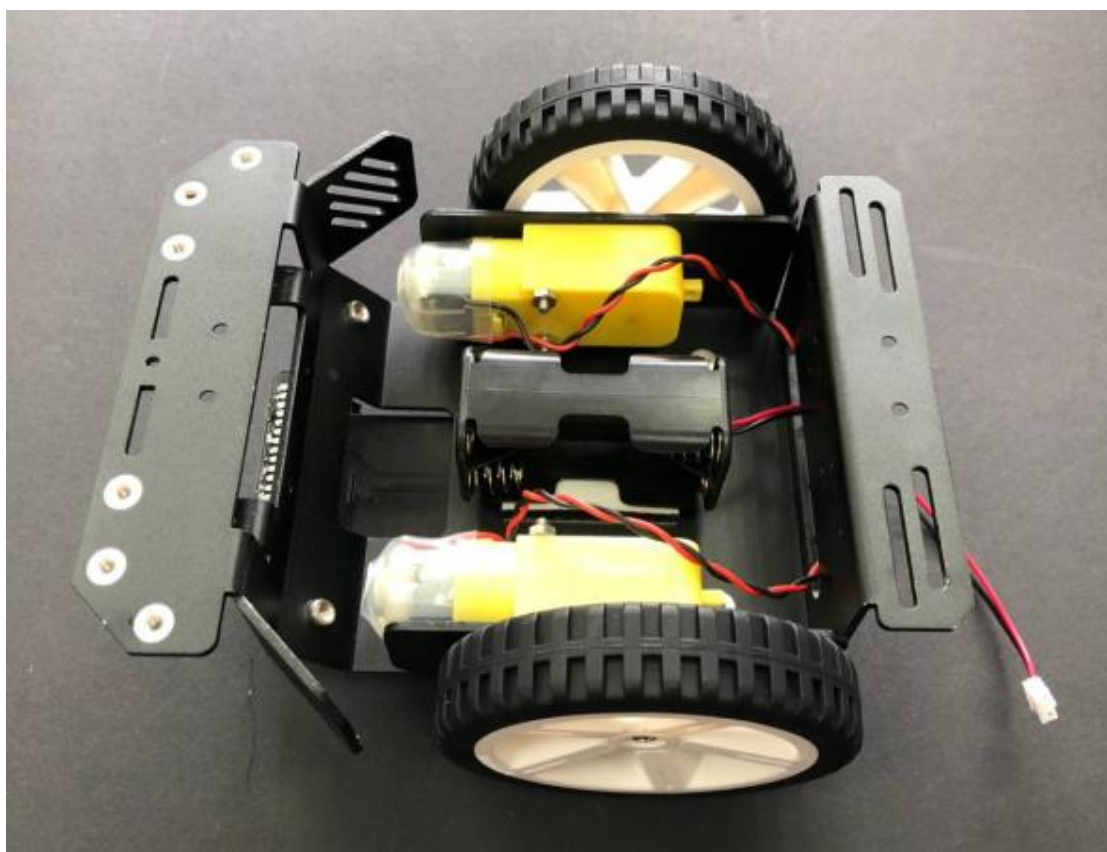


装轮子的时候，用手轻轻固定轮子，拧螺丝到拧不动即可

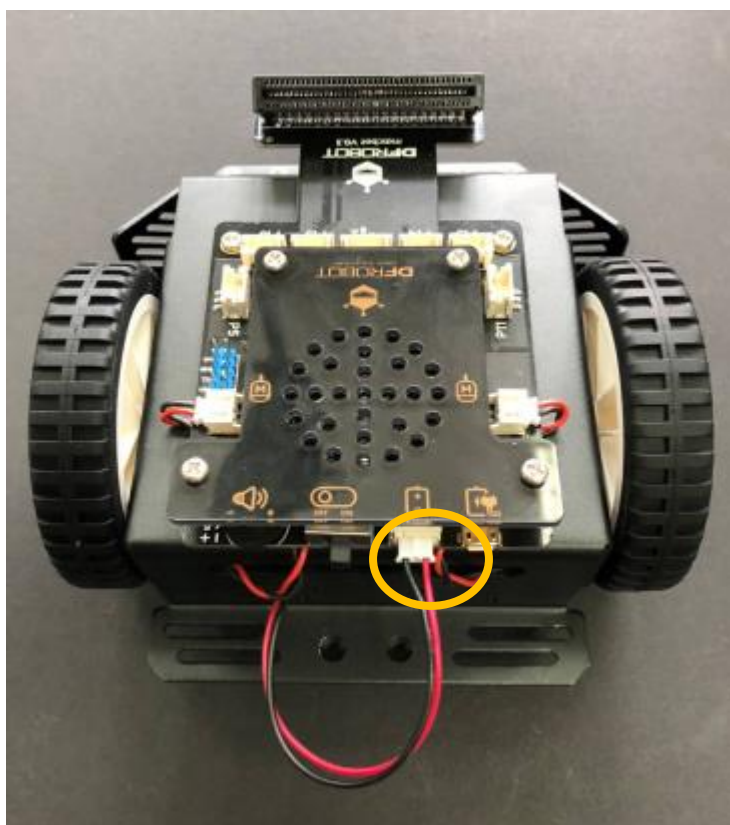


STEP 5: 装上电池盒

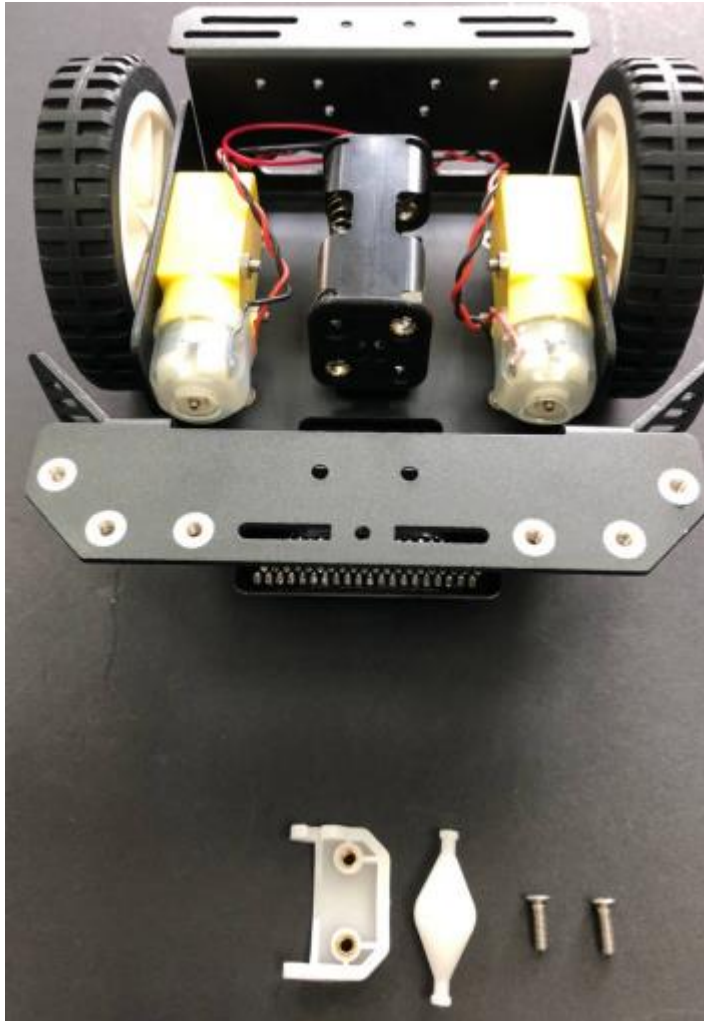


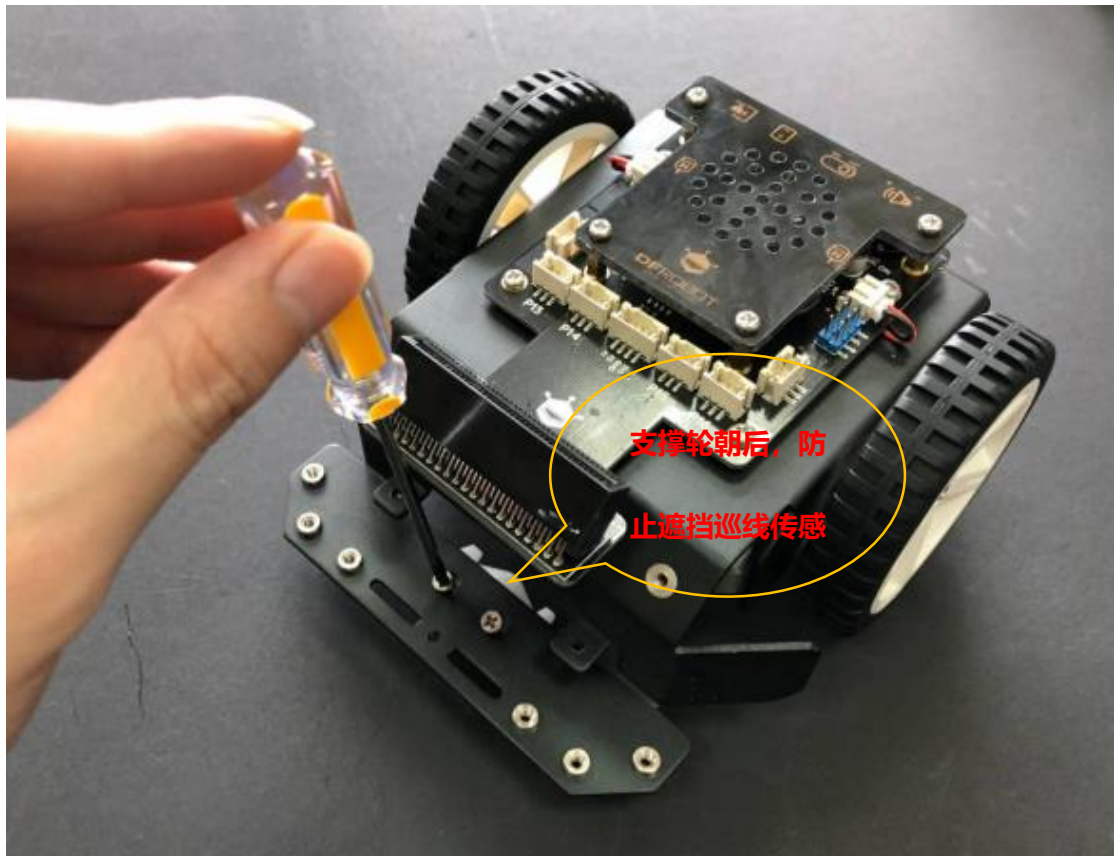


插好电池盒的线

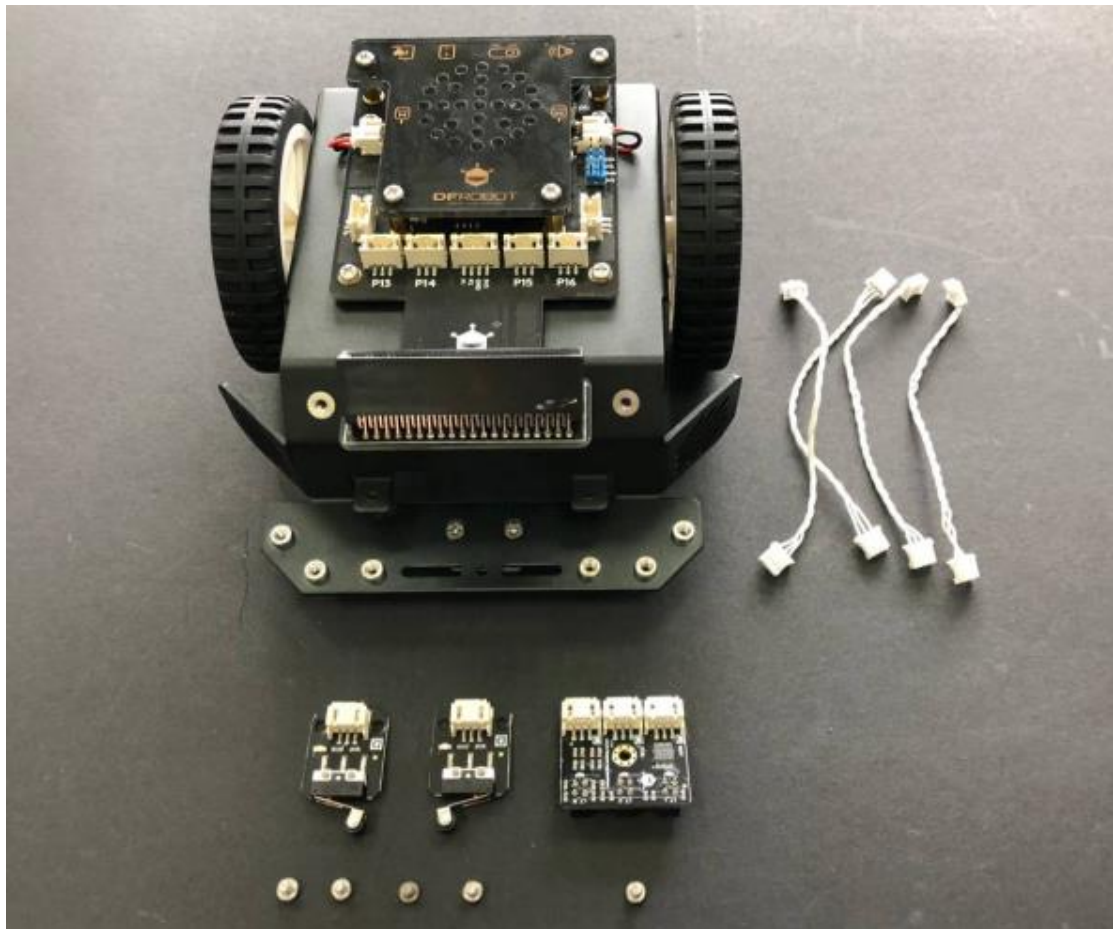


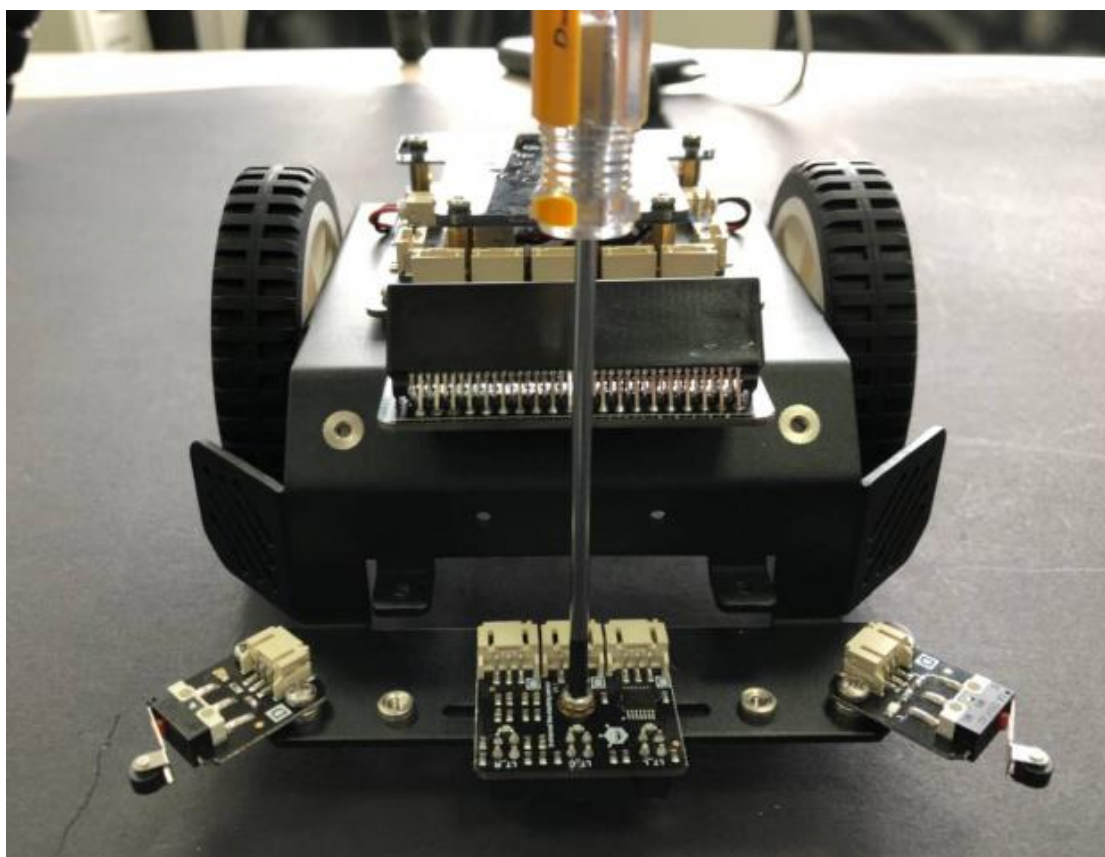
STEP 6: 组装支撑轮





STEP 7: 组装上碰撞及巡线传感器

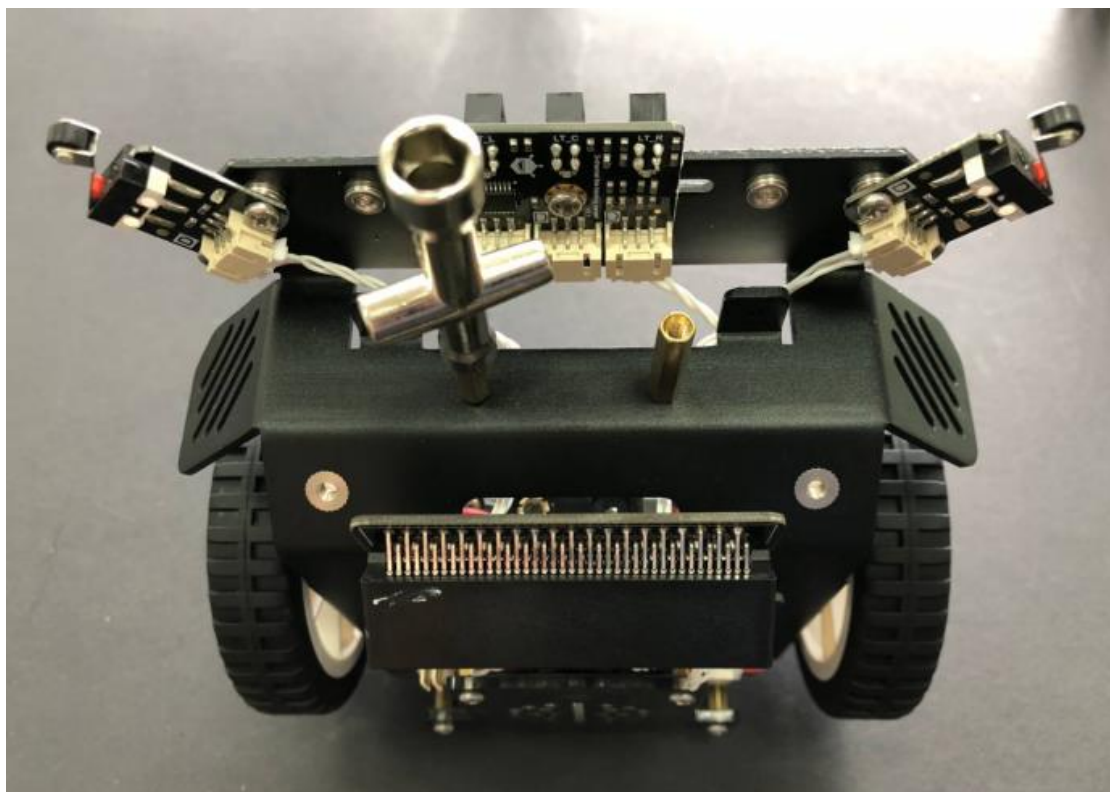
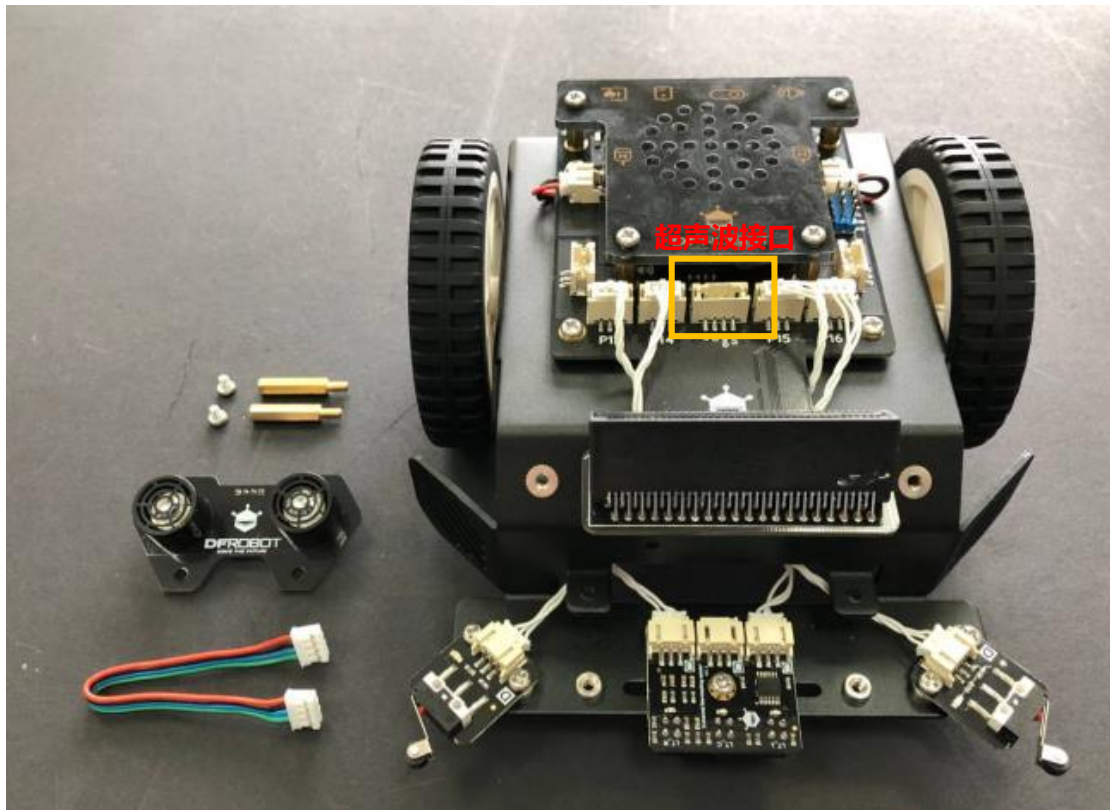


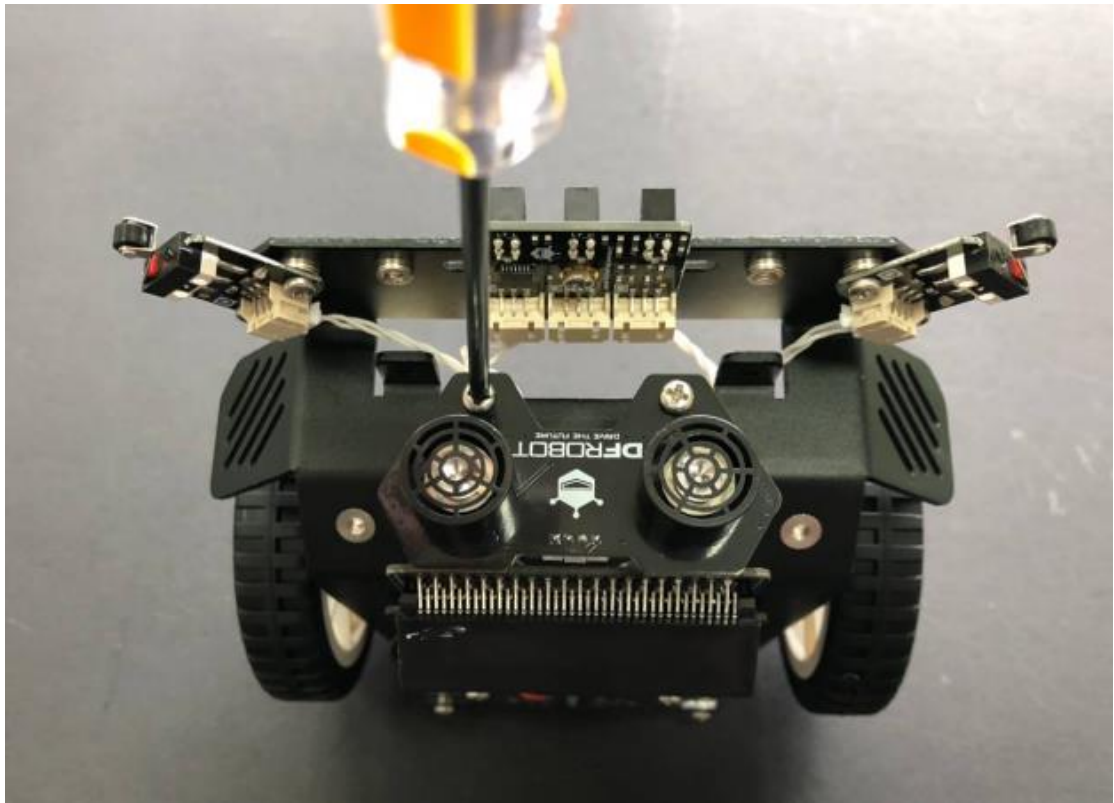
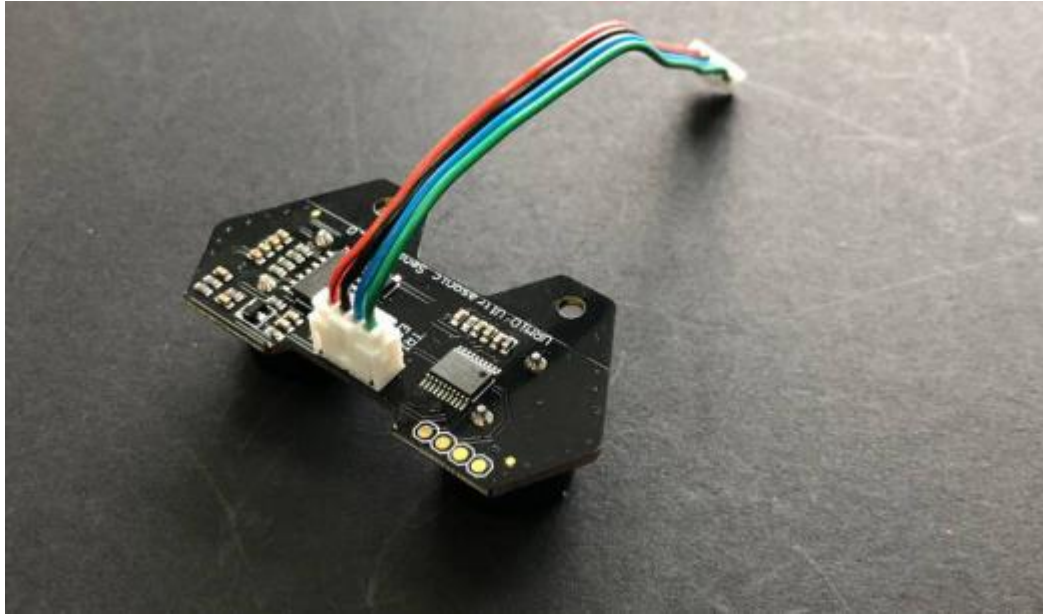


注意连线的引脚，需要和之后编程的引脚对应

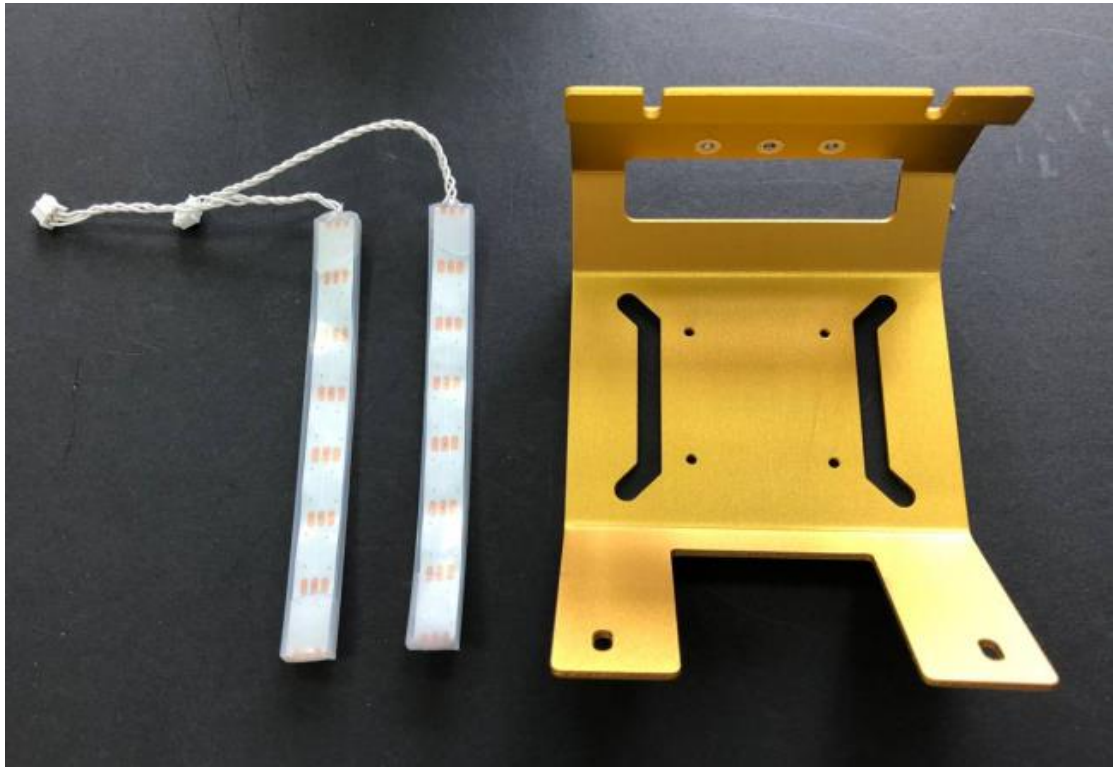
<p>碰撞开关</p>		<p>P16 (左)、P13 (右)</p>
<p>巡线传感器</p>		<p>P15 (左)、P14 (右)</p>

STEP 8: 装上超声波





STEP 9: 贴好灯带



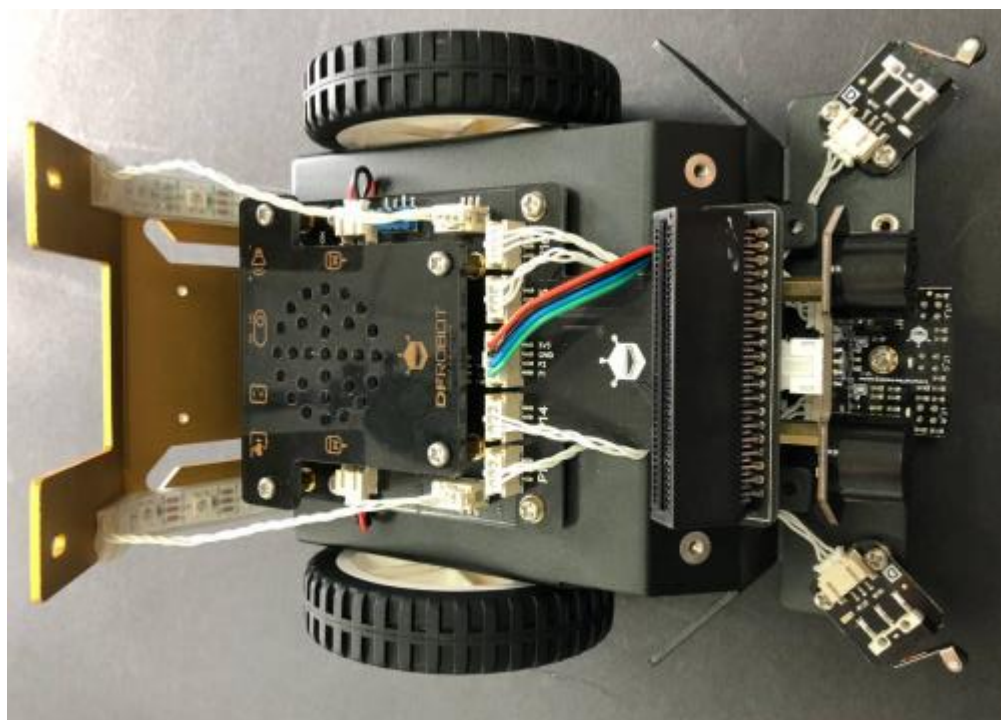
使用配套的 3M 双面胶进行黏贴



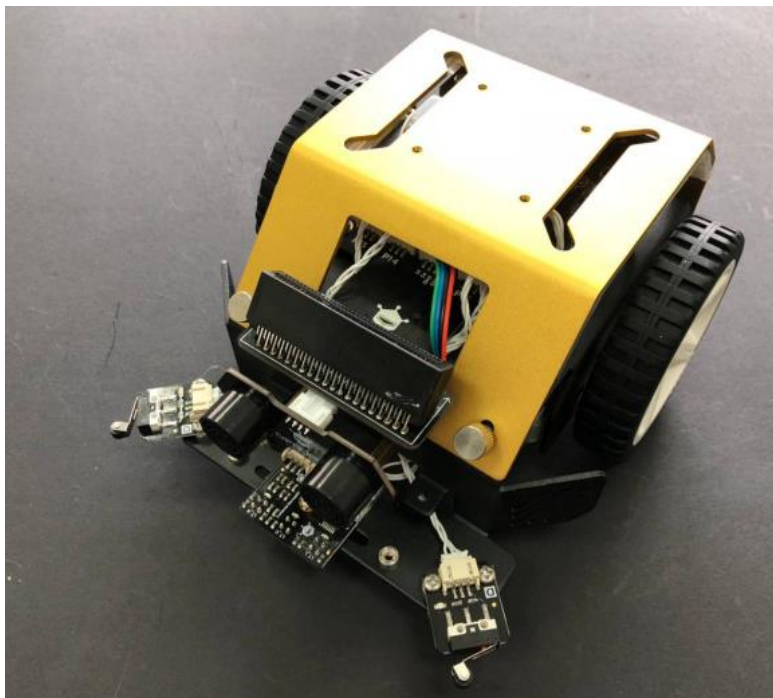
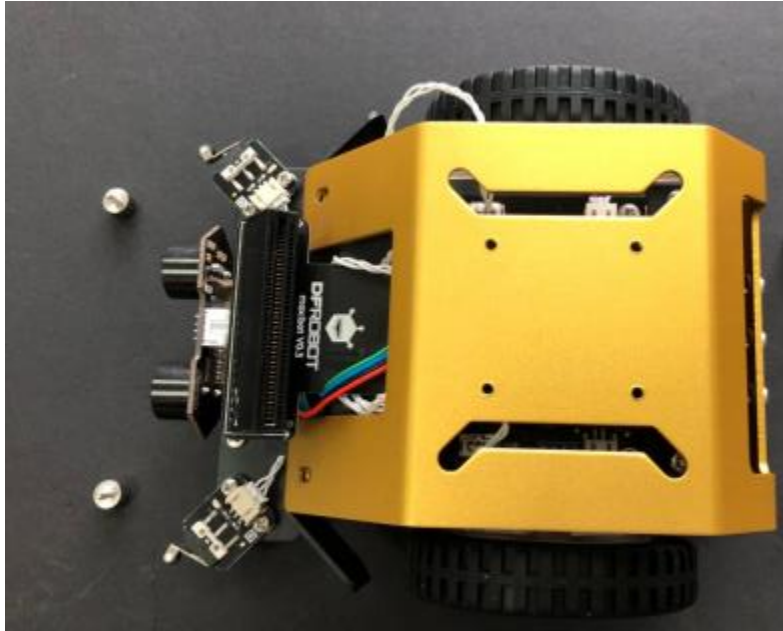
灯带



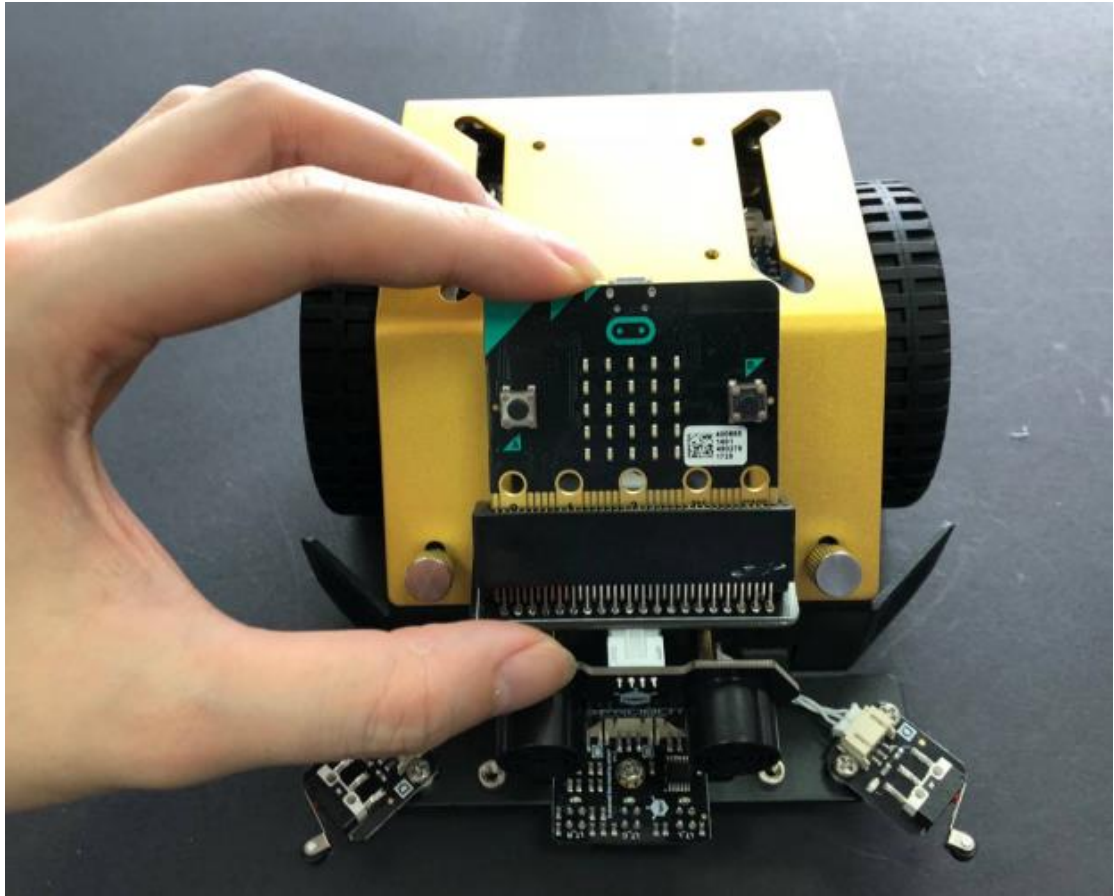
P5 (左)、P11 (右)



STEP 10: 装好车顶盖



STEP 11: 插好 micro:bit



完成啦!

恭喜组装完成，Max:bot 可以玩起来啦!

